

Lemay Avenue

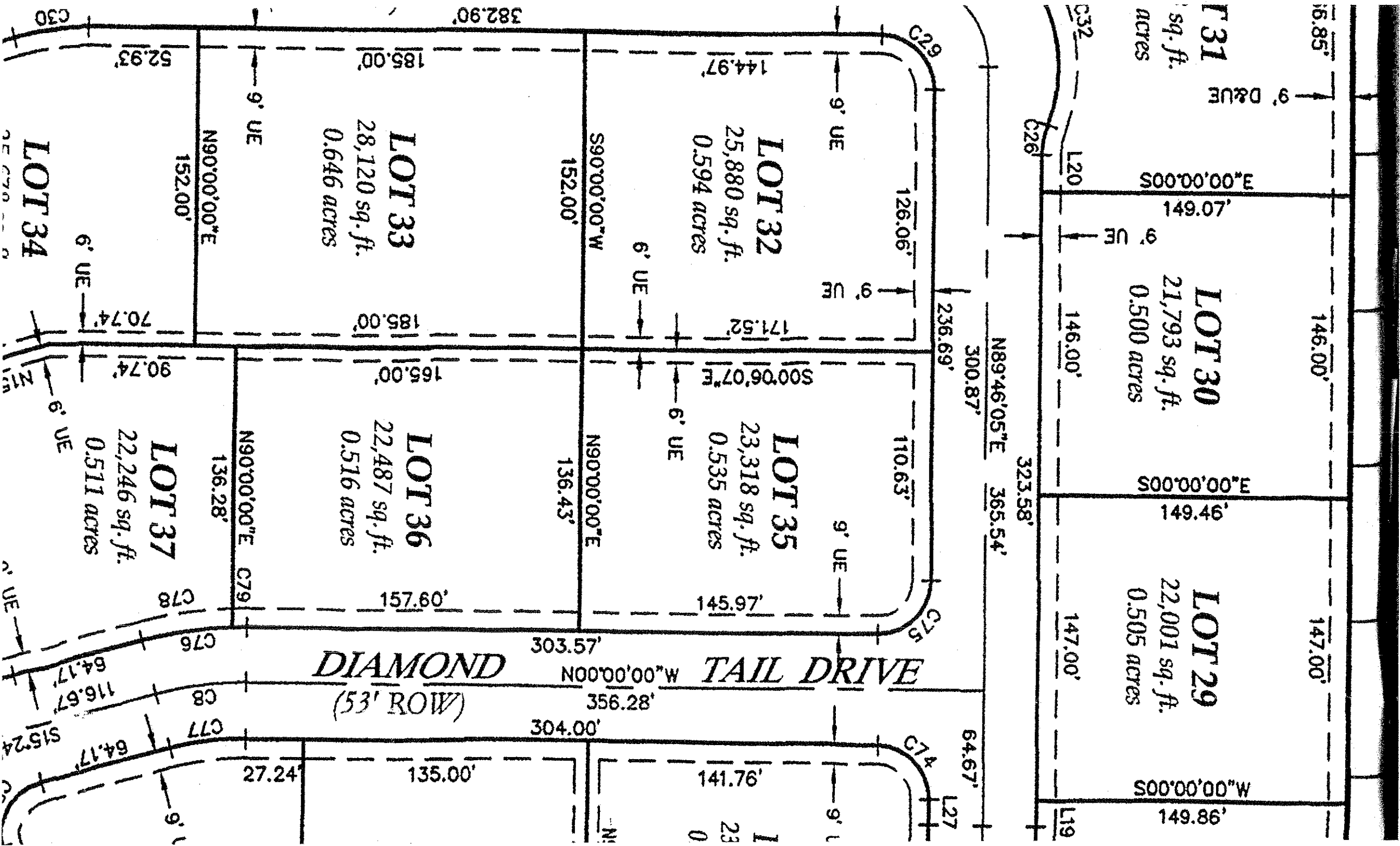
E S T A T E S

LOT 32

PLAT DOCUMENTS

INCLUDE:

- 1) Dimensional Plat
- 2) Grading Plat
- 3) Top Of Foundation Plat
- 4) Curve & Line Table



LOT 31
16.85' sq. ft.
0.38 acres

LOT 30
21,793 sq. ft.
0.500 acres

LOT 29
22,001 sq. ft.
0.505 acres

LOT 32
25,880 sq. ft.
0.594 acres

LOT 35
23,318 sq. ft.
0.535 acres

LOT 33
28,120 sq. ft.
0.646 acres

LOT 36
22,487 sq. ft.
0.516 acres

LOT 37
22,246 sq. ft.
0.511 acres

DIAMOND TAIL DRIVE
(53' ROW)

LOT 34

E 0.00'00.00'S

E 0.00'00.00'S

W 0.00'00.00'S

N 0.00'00.00"W

N 90.00'00"E

N 90.00'00"E

N 90.00'00"E

N 89.46'05"E

S 90.00'00"W

N 90.00'00"E

N 90.00'00"E

236.69'

300.87'

365.54'

323.58'

303.57'

356.28'

304.00'

52.93'

185.00'

144.97'

62.9'

152.00'

152.00'

126.06'

185.00'

171.52'

90.74'

165.00'

S 0.06'07"E

110.63'

136.28'

136.43'

146.00'

146.00'

149.46'

147.00'

147.00'

149.86'

64.67'

27.24'

135.00'

141.76'

64.67'

9.1'

9.1'

9.1'

6' UE

6' UE

6' UE

6' UE

9' UE

9' UE

9' UE

9' UE

9' D&UE

C78

C76

C77

C79

C8

C7

N15

N15

N15

C30

C29

C26

C26

C26

C29

C75

C74

L20

L27

L20

L19

E 0.00'00.00'S

E 0.00'00.00'S

W 0.00'00.00'S

N 0.00'00.00"W

N 90.00'00"E

N 90.00'00"E

N 90.00'00"E

N 89.46'05"E

S 90.00'00"W

N 90.00'00"E

N 90.00'00"E

236.69'

300.87'

365.54'

323.58'

303.57'

356.28'

304.00'

52.93'

185.00'

144.97'

62.9'

152.00'

152.00'

126.06'

185.00'

171.52'

90.74'

165.00'

S 0.06'07"E

110.63'

136.28'

136.43'

146.00'

146.00'

149.46'

147.00'

147.00'

149.86'

64.67'

27.24'

135.00'

141.76'

64.67'

9.1'

9.1'

9.1'

6' UE

6' UE

6' UE

6' UE

9' UE

9' UE

9' UE

9' UE

9' D&UE

C78

C76

C77

C79

C8

C7

N15

N15

N15

C30

C29

C26

C26

C26

C29

C75

C74

L20

L27

L20

L19

E 0.00'00.00'S

E 0.00'00.00'S

W 0.00'00.00'S

N 0.00'00.00"W

N 90.00'00"E

N 90.00'00"E

N 90.00'00"E

N 89.46'05"E

S 90.00'00"W

N 90.00'00"E

N 90.00'00"E

236.69'

300.87'

365.54'

323.58'

303.57'

356.28'

304.00'

52.93'

185.00'

144.97'

62.9'

152.00'

152.00'

126.06'

185.00'

171.52'

90.74'

165.00'

S 0.06'07"E

110.63'

136.28'

136.43'

146.00'

146.00'

149.46'

147.00'

147.00'

149.86'

64.67'

27.24'

135.00'

141.76'

64.67'

9.1'

9.1'

9.1'

6' UE

6' UE

6' UE

6' UE

9' UE

9' UE

9' UE

9' UE

9' D&UE

C78

C76

C77

C79

C8

C7

N15

N15

N15

C30

C29

C26

C26

C26

C29

C75

C74

L20

L27

L20

L19

E 0.00'00.00'S

E 0.00'00.00'S

W 0.00'00.00'S

N 0.00'00.00"W

N 90.00'00"E

N 90.00'00"E

N 90.00'00"E

N 89.46'05"E

S 90.00'00"W

N 90.00'00"E

N 90.00'00"E

236.69'

300.87'

365.54'

323.58'

303.57'

356.28'

304.00'

52.93'

185.00'

144.97'

62.9'

152.00'

152.00'

126.06'

185.00'

171.52'

90.74'

165.00'

S 0.06'07"E

110.63'

136.28'

136.43'

146.00'

146.00'

149.46'

147.00'

147.00'

149.86'

64.67'

27.24'

135.00'

141.76'

64.67'

9.1'

9.1'

9.1'

6' UE

6' UE

6' UE

6' UE

9' UE

9' UE

9' UE

9' UE

9' D&UE

C78

C76

C77

C79

C8

C7

N15

N15

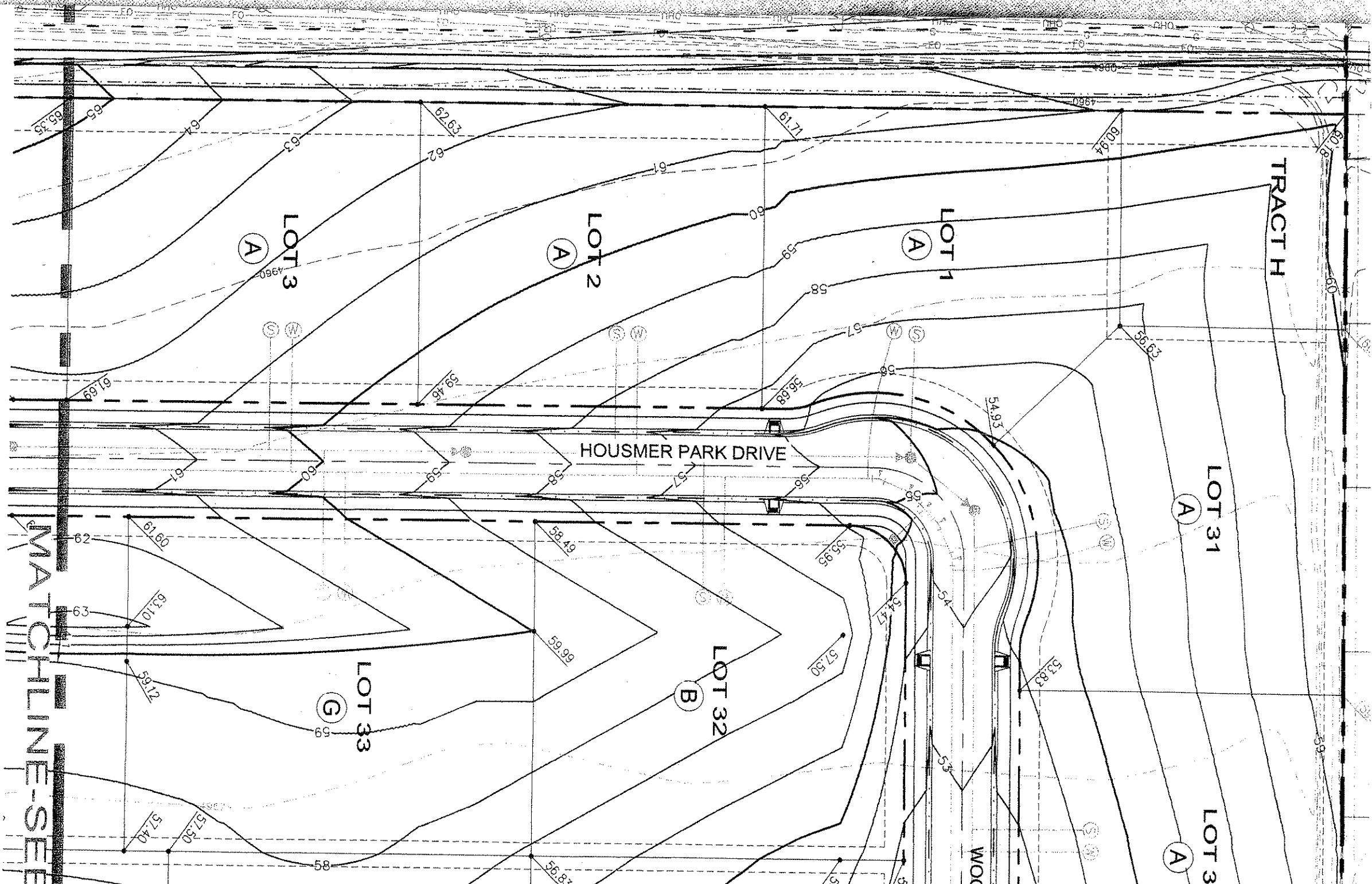
N15

C30

C29

C26

C26



TRACT H

LOT 31

LOT 3

LOT 1

LOT 2

LOT 32

LOT 33

LOT 3

HOUSMER PARK DRIVE

MATCHLINE-SEE

WOC

(A)

(A)

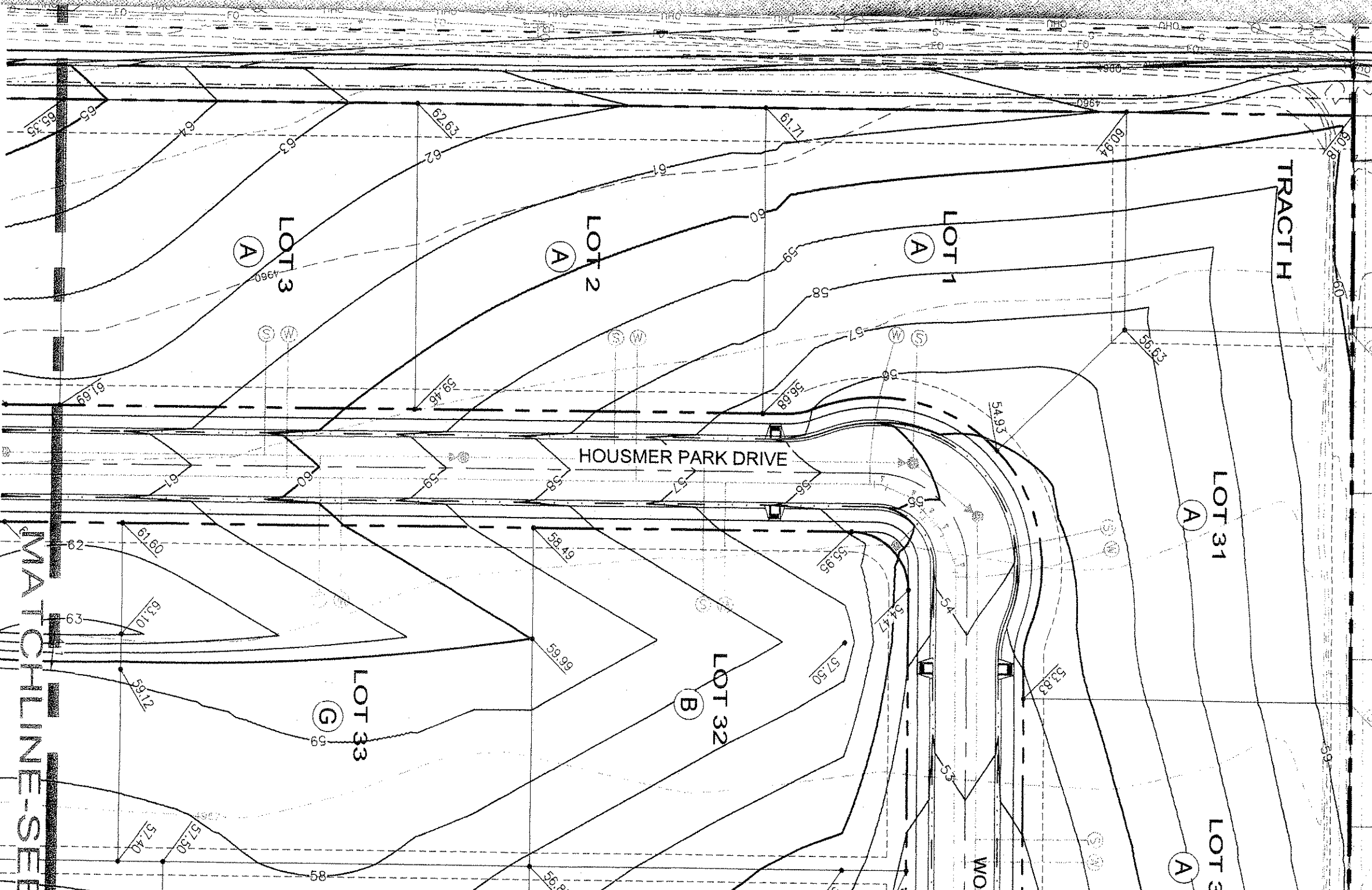
(A)

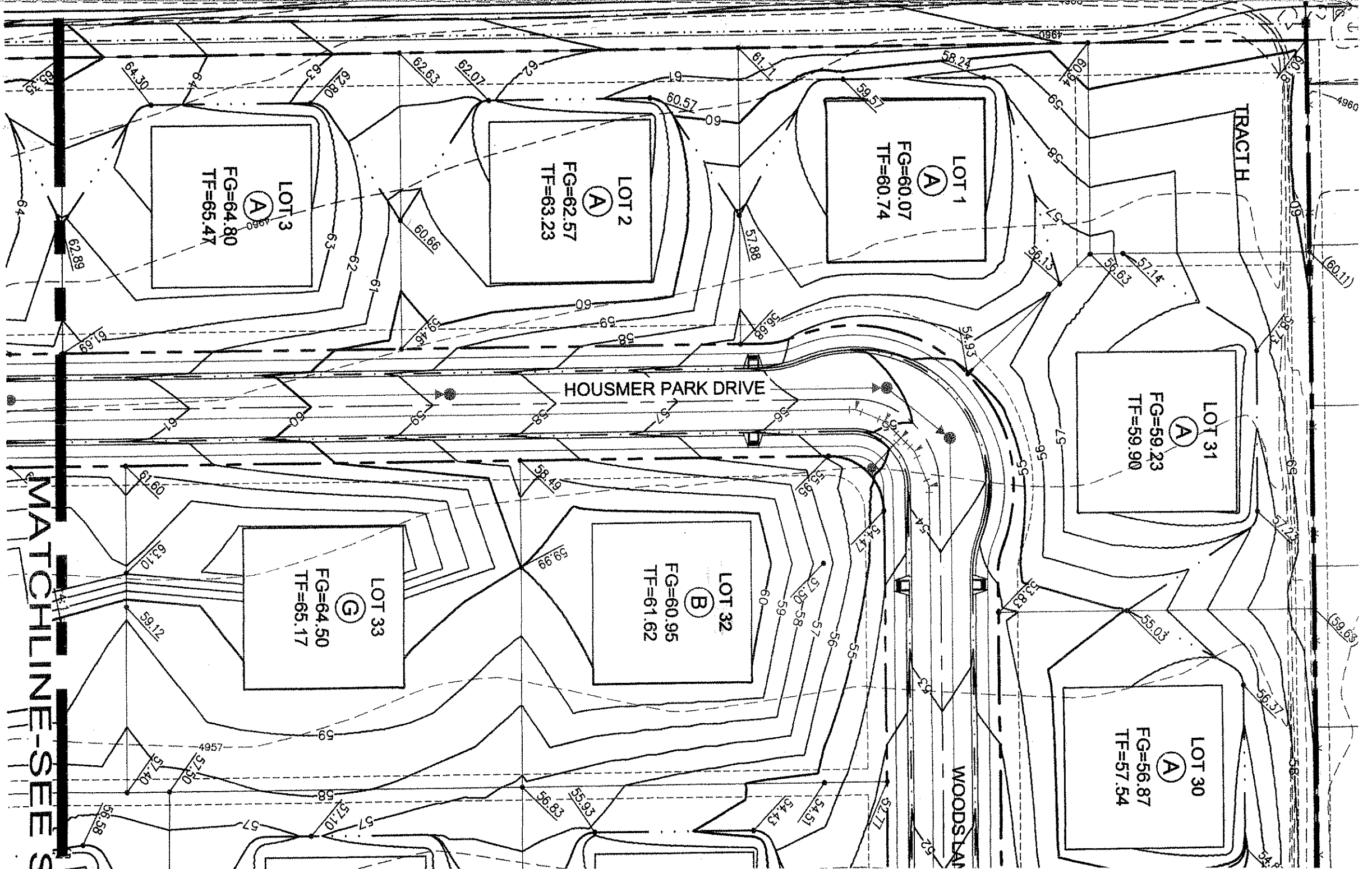
(B)

(G)

(A)

(A)





LOT 31
A
FG=59.23
TF=59.90

LOT 30
A
FG=56.87
TF=57.54

LOT 1
A
FG=60.07
TF=60.74

LOT 2
A
FG=62.57
TF=63.23

LOT 3
A
FG=64.80
TF=65.47

LOT 32
B
FG=60.95
TF=61.62

LOT 33
G
FG=64.50
TF=65.17

HOUSMER PARK DRIVE

TRACHTH

WOODSLAN

MATCHLINE-SEE S

CURVE TABLE					
CURVE	LENGTH	RADIUS	DELTA	CHORD	CH BEARING
C1	157.27	165.00	54°36'38"	151.38	N27°13'15"E
C2	48.31	165.00	16°46'36"	48.14	S46°08'16"W
C3	150.47	165.00	52°15'02"	145.31	N63°52'29"E
C4	63.93	41.00	89°20'08"	57.65	S45°19'56"E
C5	42.46	165.00	14°44'43"	42.35	N08°02'14"W
C6	44.08	165.00	15°18'28"	43.95	S07°45'21"E
C7	64.31	41.00	89°52'12"	57.92	S44°49'59"W
C8	44.38	165.00	15°24'35"	44.24	S07°42'17"E
C9	44.38	165.00	15°24'35"	44.24	N07°42'17"W
C10	76.60	700.00	6°16'10"	76.56	N87°05'50"W
C11	73.76	700.00	6°02'15"	73.73	S86°58'52"E
C12	44.38	165.00	15°24'35"	44.24	N82°17'43"E
C13	63.78	165.00	22°08'56"	63.39	N63°30'57"E
C14	36.44	135.50	15°24'35"	36.33	N82°17'43"E
C15	51.50	191.50	15°24'35"	51.35	N82°17'43"E
C16	40.84	26.00	90°00'00"	36.77	N29°35'25"E
C17	40.84	26.00	90°00'00"	36.77	N60°24'35"W
C18	40.84	26.00	90°00'00"	36.77	S60°24'35"E
C19	40.84	26.00	90°00'00"	36.77	S29°35'25"W
C20	35.64	138.50	14°44'43"	35.55	N08°02'14"W
C21	49.28	191.50	14°44'43"	49.15	N08°02'14"W
C22	14.51	38.50	21°35'33"	14.42	N10°07'54"E
C23	174.63	75.50	132°31'14"	138.22	S46°18'56"E
C24	14.51	38.50	21°35'33"	14.42	S79°12'13"W
C25	40.54	26.00	89°20'08"	36.56	S45°19'56"E
C26	14.51	38.50	21°35'33"	14.42	S79°26'08"E
C27	175.33	138.50	133°03'18"	138.50	S44°49'59"W
C28	14.51	38.50	21°35'33"	14.42	N10°53'53"W
C29	40.78	26.00	89°52'12"	36.73	S44°49'59"W
C30	37.00	138.50	15°18'28"	36.89	S07°45'21"E
C31	51.16	191.50	15°18'28"	51.01	S07°45'21"E
C32	85.72	75.50	65°02'53"	81.19	S78°50'12"W
C33	89.61	75.50	68°00'25"	84.45	S12°18'33"W
C34	8.91	191.50	2°39'59"	8.91	N01°59'51"W
C35	6.18	75.50	4°41'21"	6.18	N70°45'07"E
C36	14.91	75.50	11°19'06"	14.89	S15°16'08"W
C37	83.80	75.50	63°35'30"	79.56	S22°11'11"E
C38	69.74	75.50	52°55'17"	67.28	S80°26'34"E
C39	40.84	26.00	90°00'00"	36.77	N45°00'00"E
C40	40.84	26.00	90°00'00"	36.77	S45°00'00"E
C41	174.64	191.50	52°15'02"	168.65	N63°52'29"E
C42	126.30	138.50	52°15'02"	121.97	N63°52'29"E
C43	48.96	191.50	14°38'54"	48.83	N82°40'33"E
C44	107.31	191.50	32°06'22"	105.91	N53°48'09"E
C45	40.55	138.50	16°46'36"	40.41	S46°08'16"W
C46	56.07	191.50	16°46'36"	55.87	S46°08'16"W
C47	21.37	191.50	6°23'34"	21.36	S40°56'45"W
C48	34.71	191.50	10°23'02"	34.66	S49°20'02"W

CURVE TABLE					
CURVE	LENGTH	RADIUS	DELTA	CHORD	CH BEARING
C49	182.53	191.50	54°36'38"	175.69	N27°13'15"E
C50	132.01	138.50	54°36'38"	127.07	N27°13'15"E
C51	51.97	191.50	15°33'02"	51.81	N46°45'03"E
C52	83.50	191.45	24°58'21"	82.84	N26°28'57"E
C53	47.05	191.33	14°05'22"	46.93	N06°57'24"E
C54	18.37	191.50	5°29'46"	18.36	N72°36'13"E
C55	94.86	138.50	39°14'33"	93.02	N34°54'17"E
C56	37.15	138.50	15°22'05"	37.04	N07°35'58"E
C57	40.80	26.00	89°54'56"	36.74	N45°02'32"W
C58	40.88	26.00	90°05'04"	36.80	S44°57'28"W
C59	33.23	38.50	49°27'30"	32.21	N65°16'15"W
C60	299.38	61.50	278°55'00"	79.95	N00°00'00"E
C61	33.23	38.50	49°27'30"	32.21	N65°16'15"E
C62	13.79	61.50	12°50'57"	13.76	S46°57'58"E
C63	90.31	61.50	84°08'00"	82.41	N84°32'33"E
C64	36.03	61.50	33°33'58"	35.52	N25°41'34"E
C65	56.37	61.50	52°31'07"	54.42	N17°20'58"W
C66	76.80	61.50	71°33'10"	71.91	N79°23'06"W
C67	26.08	61.50	24°17'49"	25.88	S52°41'24"W
C68	40.84	26.00	90°00'11"	36.77	S44°59'54"E
C69	40.84	26.00	89°59'49"	36.77	N45°00'06"E
C70	76.55	726.50	6°02'15"	76.52	S86°58'52"E
C71	70.97	673.50	6°02'15"	70.94	S86°58'52"E
C72	79.50	726.50	6°16'10"	79.46	N87°05'50"W
C73	73.70	673.50	6°16'10"	73.66	N87°05'50"W
C74	40.74	26.00	89°46'05"	36.70	S44°53'03"W
C75	40.95	26.00	90°13'55"	36.84	N45°06'57"W
C76	51.50	191.50	15°24'35"	51.35	S07°42'17"E
C77	37.25	138.50	15°24'35"	37.14	S07°42'17"E
C78	44.10	191.50	13°11'44"	44.01	S08°48'43"E
C79	7.40	191.50	2°12'51"	7.40	S01°06'25"E
C80	40.84	26.00	90°00'00"	36.77	N29°35'25"E
C81	40.84	26.00	90°00'00"	36.77	S60°24'35"E
C82	40.84	26.00	90°00'00"	36.77	S29°35'25"W
C83	40.84	26.00	90°00'00"	36.77	N60°24'35"W
C84	51.50	191.50	15°24'35"	51.35	N07°42'17"W
C85	37.25	138.50	15°24'35"	37.14	N07°42'17"W
C86	74.03	191.50	22°08'56"	73.57	N63°30'57"E
C87	53.54	138.50	22°08'56"	53.21	N63°30'57"E
C88	33.23	38.50	49°27'30"	32.21	S77°10'14"W
C89	299.40	61.50	278°55'00"	79.95	N27°42'44"E
C90	33.23	38.50	49°27'30"	32.21	N27°42'44"E
C91	93.02	61.50	86°39'14"	84.40	N58°34'22"E
C92	20.37	61.50	18°58'36"	20.28	N05°45'27"E
C93	80.94	61.50	75°24'20"	75.23	N41°26'01"W
C94	105.07	61.50	97°52'50"	92.75	S51°55'24"W
C95	40.37	191.50	12°04'44"	40.30	N09°22'13"W
C96	2.53	26.00	5°34'05"	2.53	N71°48'22"E

LINE TABLE		
LINE	BEARING	LENGTH
L1	S15°58'23"E	146.77
L2	S15°09'52"W	147.04
L3	S47°46'43"W	104.49
L4	S00°10'42"W	83.04
L5	S04°53'23"E	148.97
L6	S26°38'42"W	122.90
L7	N81°09'21"W	85.74
L8	N76°39'20"W	28.48
L9	N89°53'53"E	26.42
L10	N75°38'28"E	38.86
L11	N62°14'52"E	23.49
L12	N54°19'44"E	15.92
L13	N42°02'42"E	17.24
L14	N03°58'37"E	24.83
L15	S74°35'25"W	17.12
L16	N15°24'35"W	11.00
L17	N00°53'36"E	4.45
L18	S37°38'30"E	6.37
L19	N89°46'05"E	12.74
L20	N89°46'05"E	17.84
L21	S52°15'02"E	38.36
L22	S52°26'39"W	9.93
L23	N74°35'25"E	17.12
L24	N90°00'00"W	14.03
L25	S00°06'07"E	29.50
L26	S00°06'07"E	29.50
L27	N89°46'05"E	12.38
L28	S15°24'35"E	12.98
L29	S00°06'07"E	10.62
L30	N90°00'00"E	17.78
L31	S74°16'32"W	20.21
L32	N64°04'44"E	24.90
L33	S90°00'00"E	49.52
L34	N76°23'28"W	20.26
L35	S85°54'16"E	19.36
L36	N75°30'38"W	17.68
L37	S67°22'50"E	31.04
L38	S90°00'00"E	42.20
L39	S53°07'35"W	27.15
L40	N60°30'12"E	16.79