

# Lemay Avenue

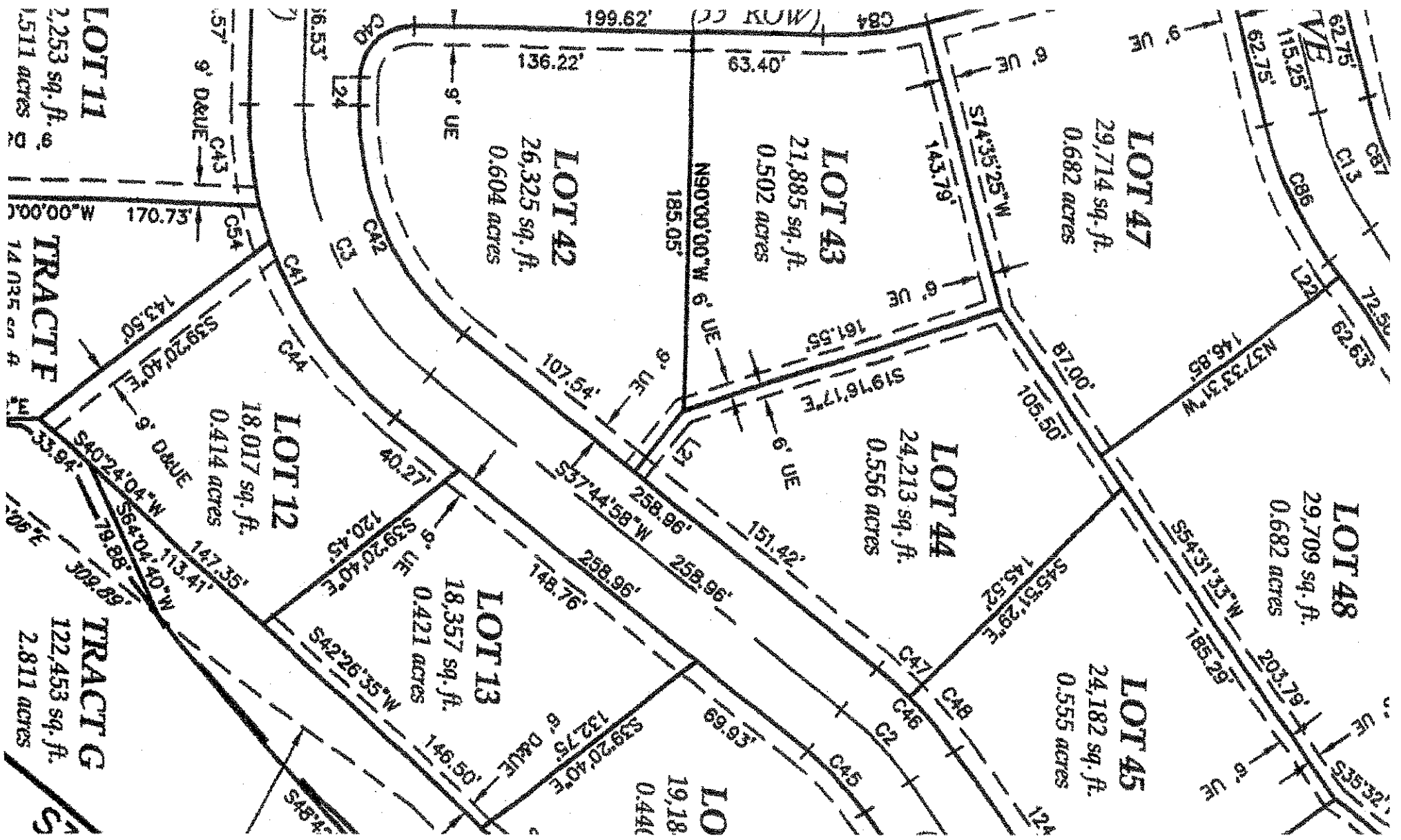
## ESTATES

LOT 43

PLAT DOCUMENTS

### INCLUDE:

- 1) Dimensional Plat
- 2) Grading Plat
- 3) Top Of Foundation Plat
- 4) Curve & Line Table



**LOT 48**  
29,709 sq. ft.  
0.682 acres

**LOT 47**  
29,714 sq. ft.  
0.682 acres

**LOT 45**  
24,182 sq. ft.  
0.555 acres

**LOT 44**  
24,213 sq. ft.  
0.556 acres

**LOT 43**  
21,885 sq. ft.  
0.502 acres

**LOT 10**  
19.18  
0.441

**LOT 42**  
26,325 sq. ft.  
0.604 acres

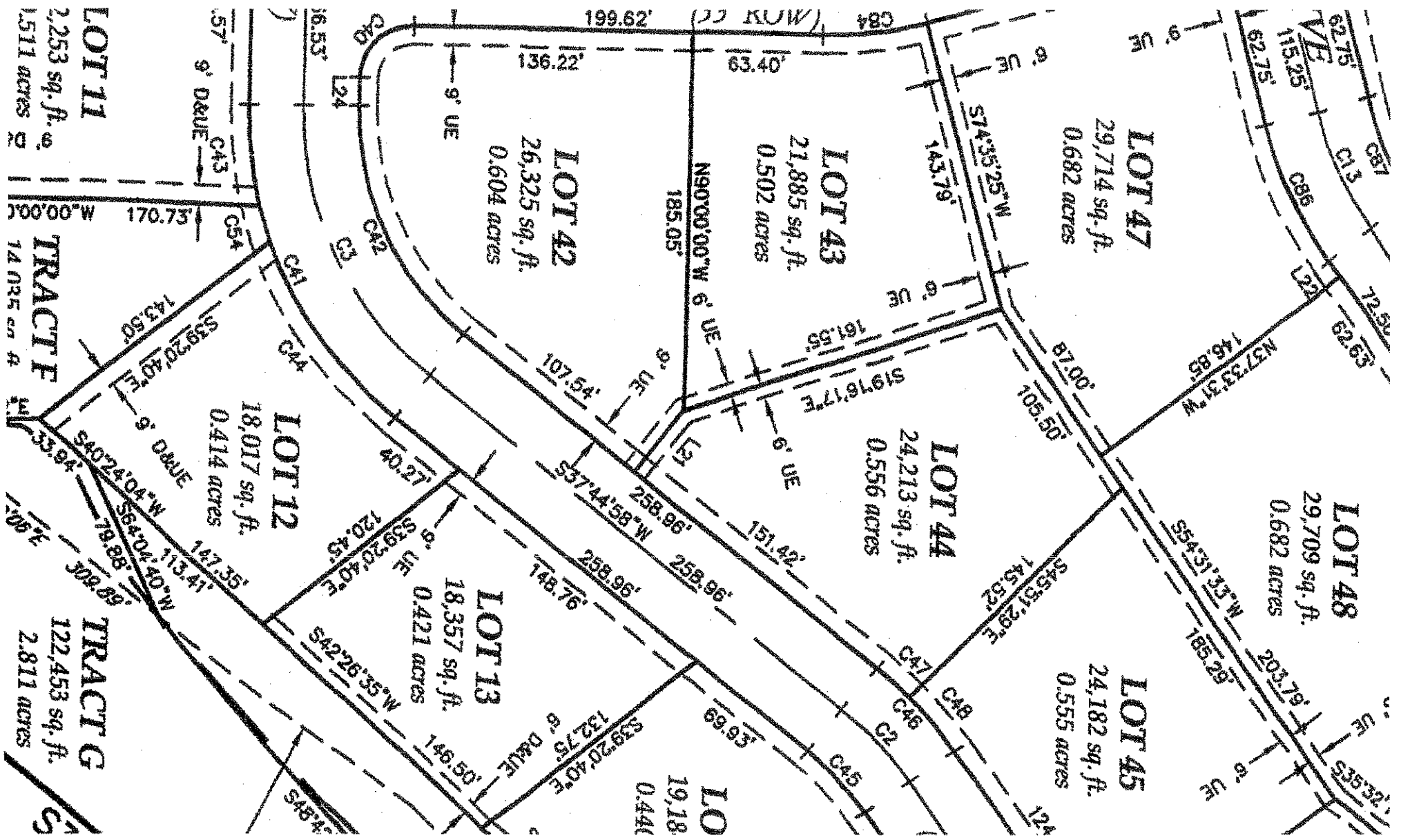
**LOT 13**  
18,357 sq. ft.  
0.421 acres

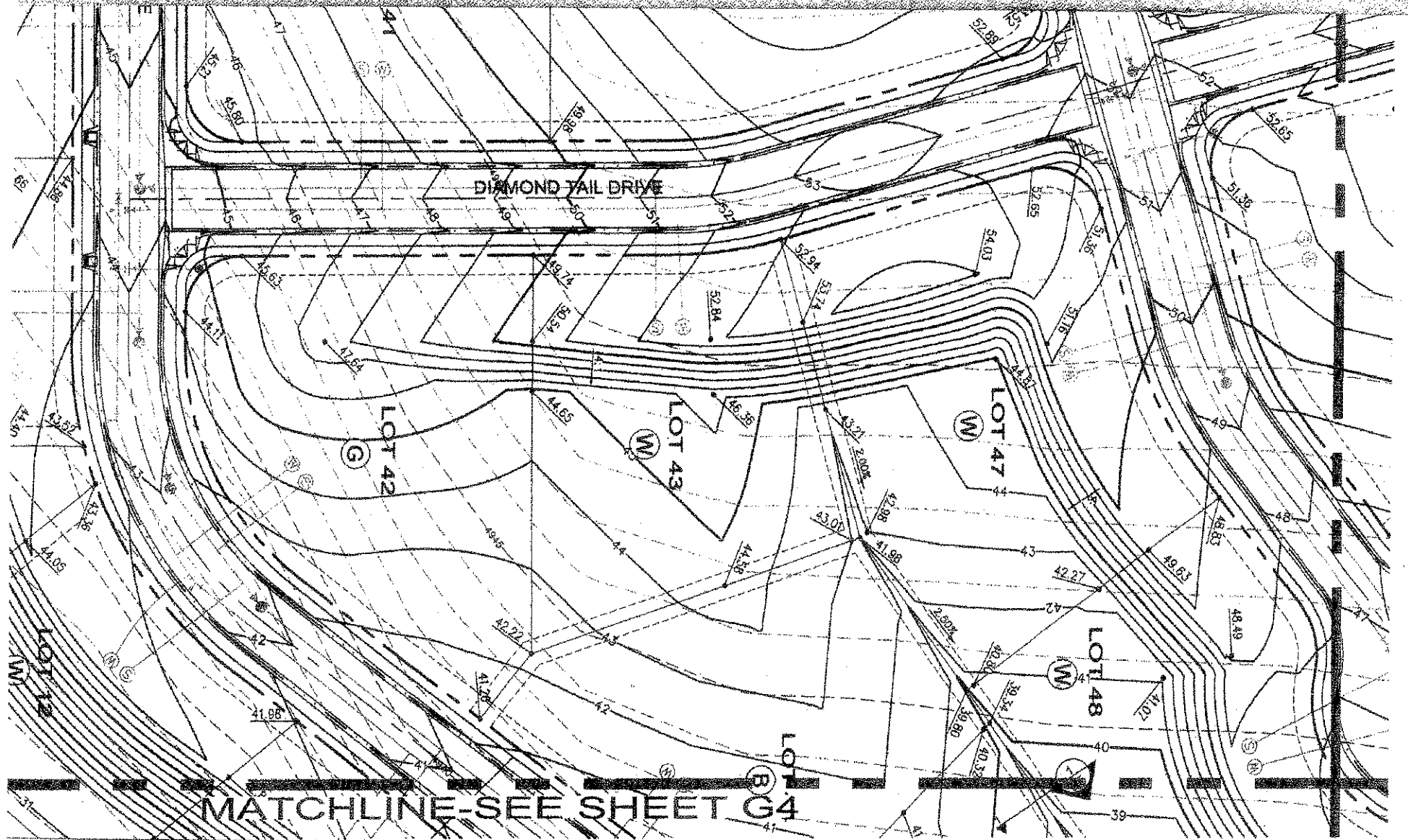
**LOT 12**  
18,017 sq. ft.  
0.414 acres

**LOT 11**  
2,253 sq. ft.  
0.051 acres

**TRACT F**  
14.035 ac. ft.

**TRACT G**  
122,453 sq. ft.  
2.811 acres







CURVE	LENGTH	RADIUS	DELTA	CHORD	CH BEARING
C1	167.27	165.00	54.36.38	151.36	N2713.15E
C2	48.31	165.00	16.46.39	48.14	S46.08.16W
C3	150.47	165.00	52.16.02	149.31	N63.52.28E
C4	63.93	41.00	69.20.08	67.65	S45.19.56E
C5	42.48	165.00	14.44.45	42.35	N08.05.14W
C6	44.08	165.00	15.16.28	43.95	S07.45.21E
C7	44.31	41.00	68.52.12	57.92	S44.49.59W
C8	44.38	165.00	15.24.35	44.24	N07.42.17W
C9	76.60	700.00	8.19.10	76.56	N87.05.30W
C10	73.76	700.00	8.02.16	73.73	S66.58.52E
C11	44.36	165.00	15.24.35	44.24	N82.17.43E
C12	44.36	165.00	15.24.35	44.24	N82.17.43E
C13	63.78	165.00	22.08.56	63.39	N63.30.57E
C14	36.44	135.50	15.24.35	36.33	N82.17.43E
C15	61.50	181.50	15.24.35	61.35	N82.17.43E
C16	40.84	26.00	80.00.00	38.77	N29.35.25E
C17	40.84	26.00	80.00.00	38.77	N60.24.35E
C18	40.84	26.00	80.00.00	38.77	S28.35.28W
C19	40.84	26.00	80.00.00	38.77	S28.35.28W
C20	38.64	138.50	14.44.43	38.55	N08.02.14W
C21	48.26	181.50	14.44.43	48.16	N08.02.14W
C22	14.51	38.50	21.35.33	14.42	N10.07.54E
C23	174.63	76.50	132.31.14	138.22	S45.19.56E
C24	14.51	38.50	21.35.33	14.42	S45.19.56E
C25	40.84	26.00	80.00.00	38.56	S45.19.56E
C26	14.81	38.50	21.35.33	14.42	S45.19.56E
C27	175.33	76.50	135.03.18	138.50	S45.19.56E
C28	14.51	38.50	21.35.33	14.42	N10.03.53W
C29	37.00	138.50	15.18.28	36.68	S44.49.59W
C30	37.00	138.50	15.18.28	36.68	S44.49.59W
C31	61.16	181.50	15.16.28	61.01	S07.45.21E
C32	68.72	76.50	66.02.53	61.19	S78.50.12W
C33	68.61	75.50	69.02.28	64.45	S12.18.33W
C34	6.91	191.50	2.36.59	6.91	N10.58.51W
C35	6.18	75.50	4.41.21	6.18	N70.45.07E
C36	14.91	75.50	6.35.30	79.56	S22.11.11E
C37	83.60	75.50	6.35.30	79.56	S80.26.34E
C38	68.74	75.50	6.25.17	67.28	S80.26.34E
C39	40.84	26.00	80.00.00	38.77	N45.00.00E
C40	40.84	26.00	80.00.00	38.77	N45.00.00E
C41	174.64	181.50	52.15.02	168.65	N63.52.28E
C42	126.90	138.50	62.18.02	121.97	N63.52.28E
C43	48.86	181.50	14.36.44	48.63	N82.40.33E
C44	102.31	181.50	32.06.22	105.91	N53.48.08E
C45	40.55	138.50	16.46.38	40.41	S46.08.16W
C46	66.07	181.50	16.46.38	65.87	S46.08.16W
C47	21.37	181.50	6.23.34	21.36	S40.56.45W
C48	34.71	181.50	10.23.02	34.66	S48.20.02W

CURVE TABLE

CURVE	LENGTH	RADIUS	DELTA	CHORD	CH BEARING
C49	182.63	191.50	64.36.38	175.69	N27.13.15E
C50	132.01	138.50	64.36.38	127.07	N27.13.15E
C51	61.97	181.50	16.33.02	61.81	N46.45.03E
C52	83.50	181.50	24.59.21	82.84	N26.28.57E
C53	42.05	181.50	14.05.22	48.93	N06.57.24E
C54	18.37	181.50	5.28.48	18.36	N22.36.13E
C55	94.86	138.50	39.14.33	83.02	N34.54.17E
C56	37.15	138.50	15.22.05	37.04	N07.35.58E
C57	40.80	26.00	88.54.36	36.74	N46.02.32W
C58	40.88	26.00	80.05.04	38.60	S44.57.28W
C59	33.23	38.50	48.27.30	32.21	N66.16.16W
C60	299.38	61.50	278.56.00	79.85	N60.00.00E
C61	33.23	38.50	49.27.30	32.21	N65.19.16E
C62	13.79	61.50	12.90.57	13.76	S46.57.58E
C63	80.31	61.50	84.08.00	82.41	N84.32.33E
C64	36.03	61.50	33.33.58	35.92	N25.41.54E
C65	56.37	61.50	52.31.07	54.42	N17.30.58W
C66	78.80	61.50	71.33.10	71.81	N78.23.06W
C67	26.08	61.50	24.17.49	26.88	S32.31.24W
C68	40.84	26.00	88.58.49	38.77	N45.00.00E
C69	40.84	26.00	80.00.11	38.77	S44.56.54E
C70	76.55	76.50	6.02.16	76.52	S66.58.52E
C71	70.97	673.50	6.02.16	70.94	S66.58.52E
C72	79.50	729.50	6.16.16	79.48	N67.05.50W
C73	73.70	673.50	6.16.16	73.66	N87.05.50W
C74	40.95	26.00	89.13.55	38.84	N46.06.57W
C75	40.95	26.00	89.13.55	38.84	N46.06.57W
C76	61.50	181.50	19.24.39	61.36	S07.42.17E
C77	44.10	181.50	13.11.44	44.01	S08.48.43E
C78	44.10	138.50	16.24.37	37.44	S24.32.17E
C79	7.40	181.50	2.12.51	7.40	S01.06.38E
C80	40.84	26.00	80.00.00	36.77	N29.35.25E
C81	40.84	26.00	80.00.00	36.77	N29.35.25E
C82	40.84	26.00	80.00.00	36.77	S80.24.35E
C83	40.84	26.00	80.00.00	36.77	S80.24.35E
C84	61.50	181.50	15.24.35	61.35	N07.42.17W
C85	37.45	138.50	16.24.38	37.14	N07.42.17W
C86	63.94	138.50	22.08.56	63.21	N83.30.57E
C87	63.94	138.50	22.08.56	63.21	N83.30.57E
C88	38.42	38.50	49.27.30	38.21	S77.00.14W
C89	288.40	61.50	278.56.00	79.85	N67.33.31W
C90	33.23	38.50	48.27.30	32.21	N27.42.44E
C91	93.02	61.50	88.39.14	84.40	N88.34.22E
C92	20.37	61.50	18.59.36	20.28	N05.45.27E
C93	80.84	61.50	75.24.20	75.23	H41.28.01W
C94	108.07	61.50	97.52.50	82.75	S61.55.24W
C95	40.37	181.50	12.04.44	40.30	N09.22.13W
C96	2.53	26.00	5.34.05	2.53	N71.48.22E

CURVE TABLE

LINE	BEARING	LENGTH
L1	S15.58.23E	146.77
L2	S15.09.52W	147.04
L3	S47.46.43W	104.49
L4	S00.10.42W	83.04
L5	S04.53.23E	148.97
L6	S26.38.42W	122.90
L7	N81.09.21W	65.74
L8	N76.38.20W	28.48
L9	N89.53.53E	26.42
L10	N75.38.28E	38.66
L11	N62.14.52E	23.49
L12	N54.19.44E	15.82
L13	N42.02.42E	17.24
L14	N03.58.37E	24.83
L15	S74.35.25W	17.12
L16	N15.24.35W	11.80
L17	N00.53.36E	4.45
L18	S37.38.30E	8.37
L19	N89.46.05E	12.74
L20	N89.46.05E	17.84
L21	S52.16.02E	38.36
L22	S52.26.39W	9.83
L23	N74.35.25E	17.12
L24	N90.00.00W	14.03
L25	S00.06.07E	29.50
L26	S00.06.07E	29.50
L27	N69.46.05E	12.38
L28	S15.24.35E	12.98
L29	S00.06.07E	10.62
L30	N90.00.00E	17.76
L31	S74.16.32W	20.21
L32	N64.04.44E	24.90
L33	S90.00.00E	49.52
L34	N76.23.28W	20.26
L35	S89.54.16E	19.36
L36	N75.30.38W	17.88
L37	S67.22.50E	31.04
L38	S90.00.00E	42.20
L39	S53.07.36W	27.15
L40	N60.30.12E	16.79

LINE TABLE