

Lemay Avenue

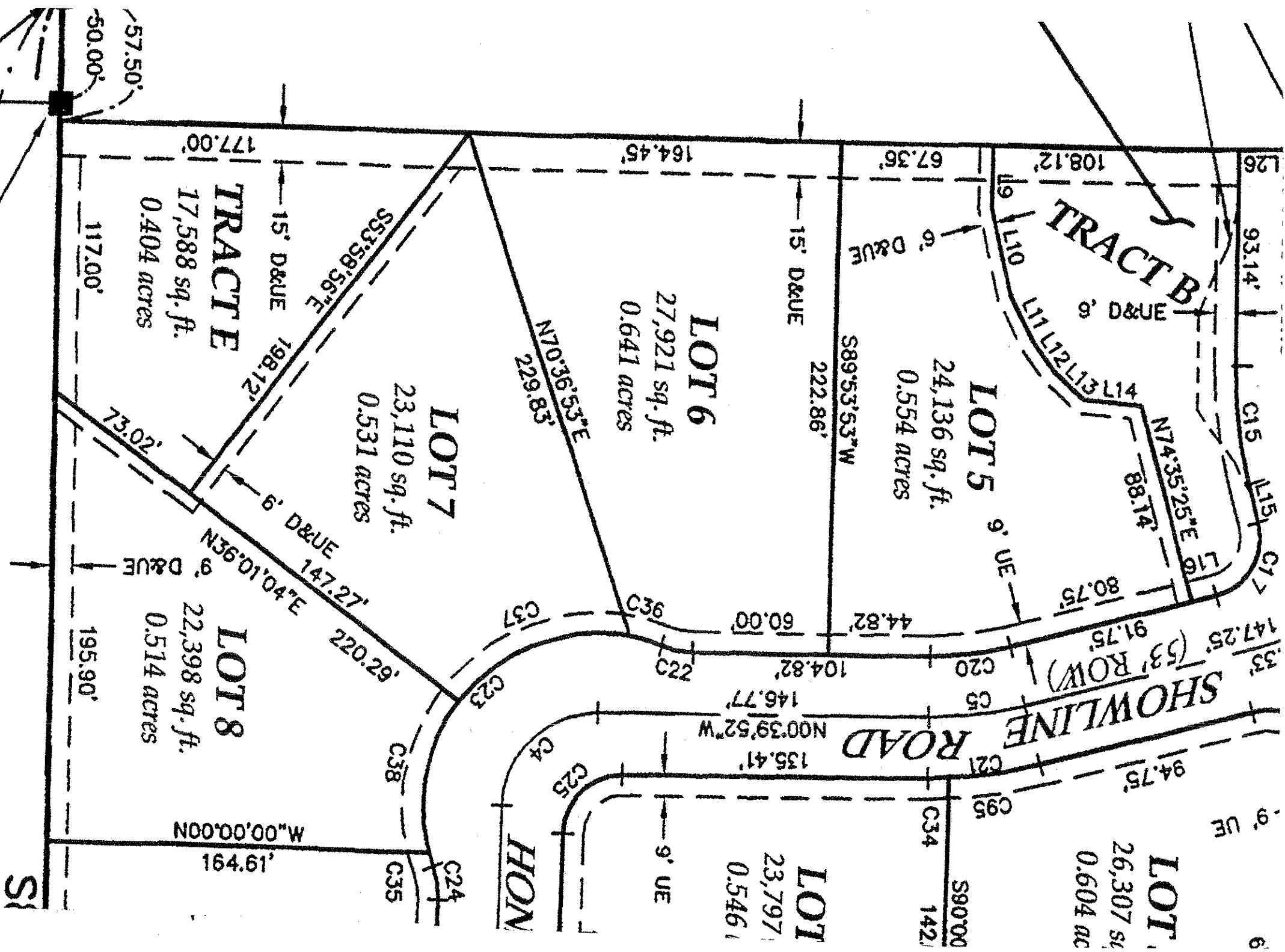
ESTATES

LOT 6

PLAT DOCUMENTS

INCLUDE:

- 1) Dimensional Plat
- 2) Grading Plat
- 3) Top Of Foundation Plat
- 4) Curve & Line Table
- 5) ~~Street Use Requirements~~
- 6) ~~Street Use Landscaping Plat~~



LOT 1
26,307 sq.
0.604 ac

LOT 5
24,136 sq. ft.
0.554 acres

LOT 6
27,921 sq. ft.
0.641 acres

LOT 7
23,110 sq. ft.
0.531 acres

LOT 8
22,398 sq. ft.
0.514 acres

TRACT A
17,588 sq. ft.
0.404 acres

TRACT B

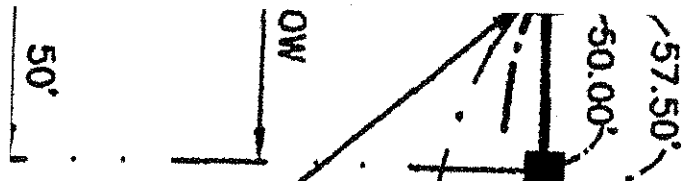
SHOWLINE ROAD
(53' ROW)

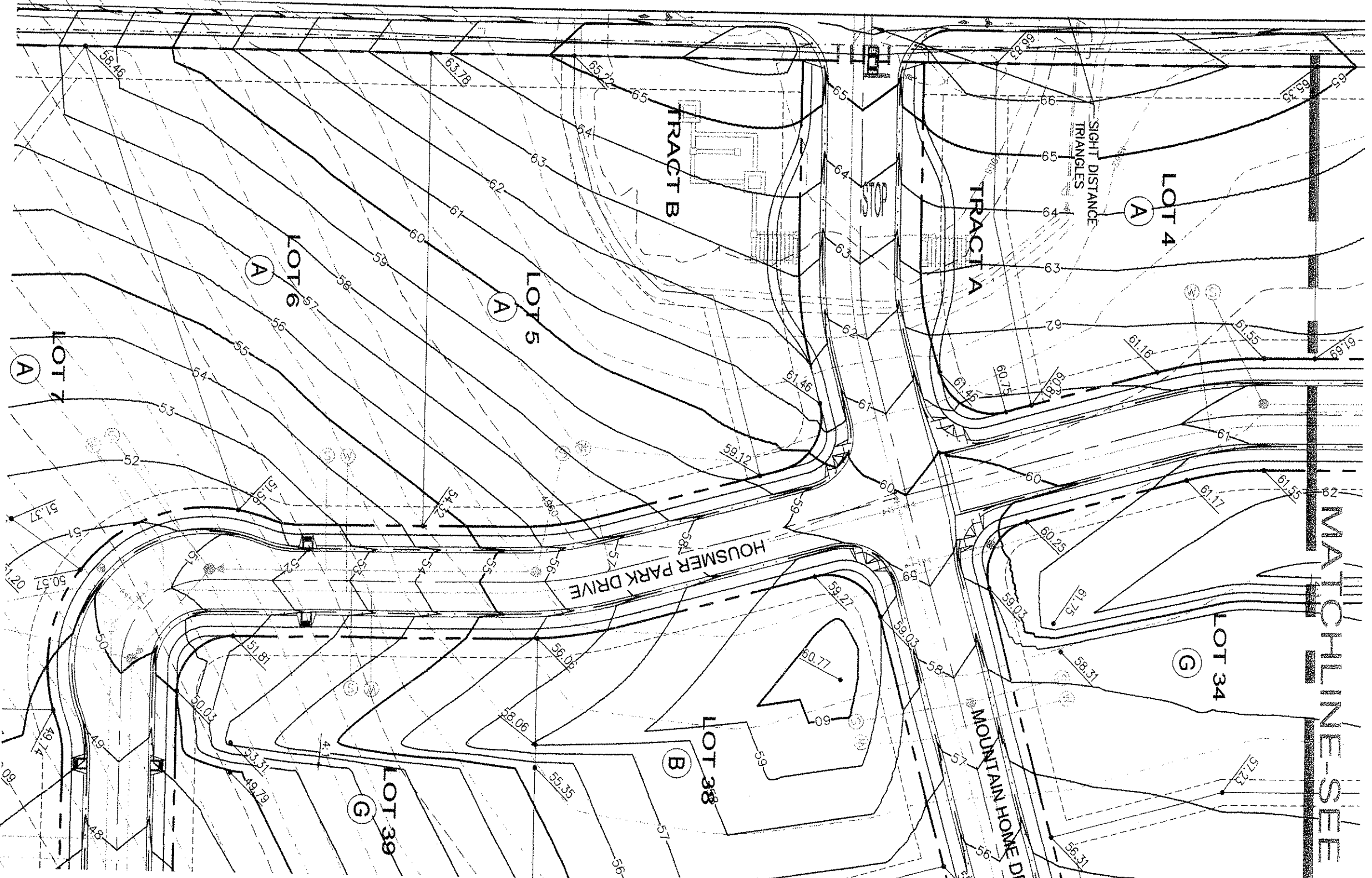
HON

S

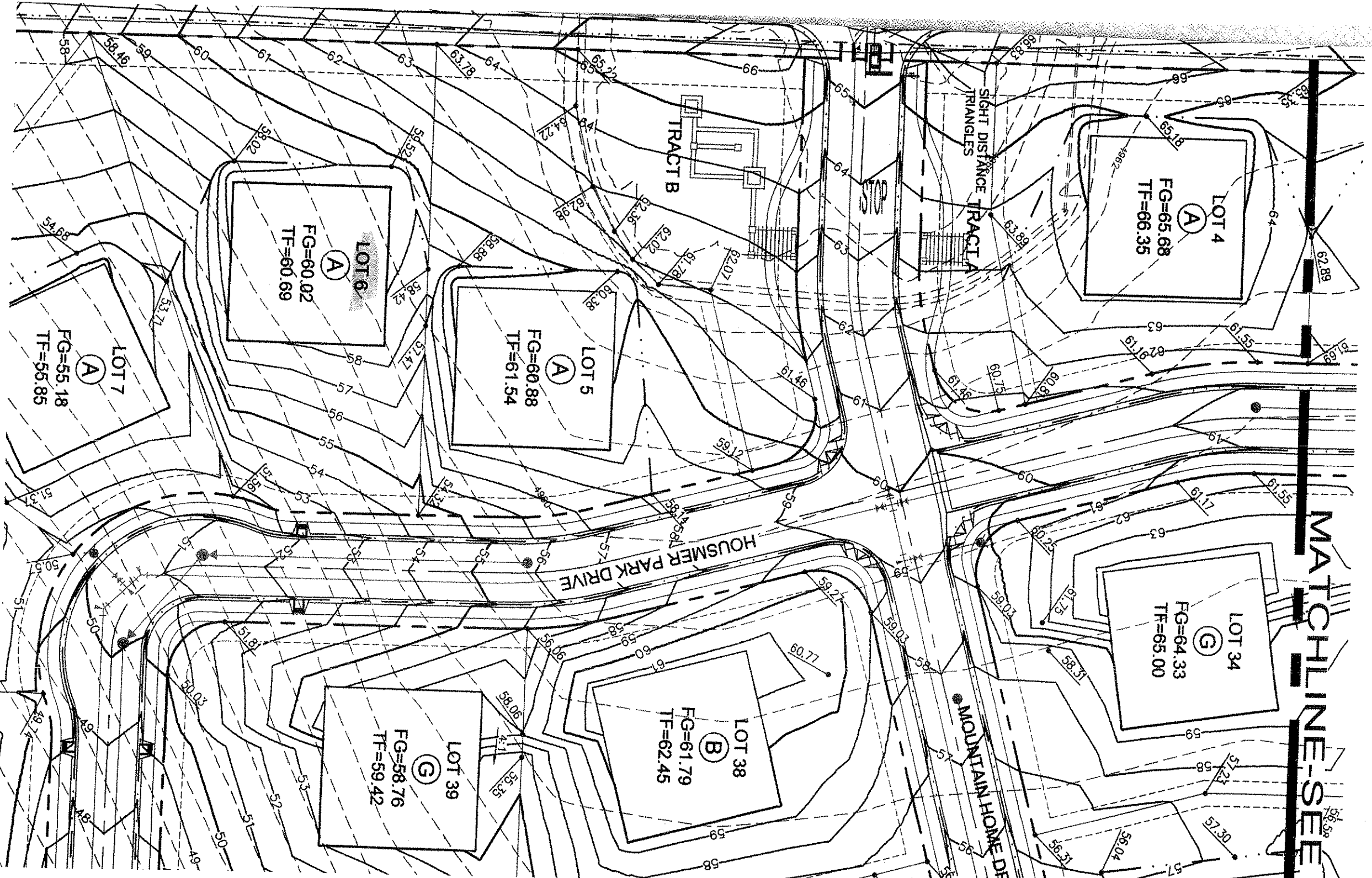
FOUND #4 REBAR WITH
A YELLOW PLASTIC CAP
STAMPED LS 12374

SOUTH SIXTEENTH CORNER
SECTION 18, T.6N., R.68W.
FOUND #4 REBAR WITH A YELLOW





MATCHLINE-SEE



MATCHLINE-SEE

LOT 4

FG=65.68
TF=66.35

(A)

LOT 5

FG=60.88
TF=61.54

(A)

LOT 6

FG=60.02
TF=60.69

(A)

LOT 7

FG=55.18
TF=55.85

(A)

LOT 34

FG=64.33
TF=65.00

(G)

LOT 38

FG=61.79
TF=62.45

(B)

LOT 39

FG=58.76
TF=59.42

(G)

TRACT B

TRACT A

HOUSMER PARK DRIVE

MOUNTAIN HOME DRIVE

STOP

SIGHT DISTANCE TRIANGLES

CURVE TABLE			
CURVE	LENGTH	RADIUS	DELTA
C1	157.27	165.00	54°36'38"
C2	48.31	165.00	16°46'36"
C3	150.47	165.00	52°15'02"
C4	63.93	41.00	89°20'08"
C5	42.46	165.00	14°44'43"
C6	44.08	165.00	15°18'28"
C7	64.31	41.00	89°52'12"
C8	44.38	165.00	15°24'35"
C9	44.38	165.00	15°24'35"
C10	76.60	700.00	6°16'10"
C11	73.76	700.00	6°02'15"
C12	44.38	165.00	15°24'35"
C13	63.78	165.00	22°08'56"
C14	36.44	135.50	15°24'35"
C15	51.50	191.50	15°24'35"
C16	40.84	26.00	90°00'00"
C17	40.84	26.00	90°00'00"
C18	40.84	26.00	90°00'00"
C19	40.84	26.00	90°00'00"
C20	35.64	138.50	14°44'43"
C21	49.28	191.50	14°44'43"
C22	14.51	38.50	21°35'33"
C23	174.63	75.50	1°32'31"14"
C24	14.51	38.50	21°35'33"
C25	40.54	38.50	21°35'33"
C26	14.51	38.50	21°35'33"
C27	175.33	75.50	1°33'03"18"
C28	14.51	38.50	21°35'33"
C29	40.78	26.00	89°52'12"
C30	37.00	138.50	15°18'28"
C31	51.16	191.50	15°18'28"
C32	85.72	75.50	65°02'53"
C33	89.61	75.50	68°00'25"
C34	8.91	191.50	2°39'59"
C35	6.18	75.50	4°41'21"
C36	14.91	75.50	11°19'06"
C37	83.80	75.50	63°35'30"
C38	69.74	75.50	52°55'17"
C39	40.84	26.00	90°00'00"
C40	40.84	26.00	90°00'00"
C41	174.64	191.50	52°15'02"
C42	126.30	138.50	52°15'02"
C43	48.96	191.50	14°38'54"
C44	107.31	191.50	32°06'22"
C45	40.55	138.50	16°46'36"
C46	56.07	191.50	16°46'36"
C47	21.37	191.50	6°23'34"
C48	34.71	191.50	10°23'02"

CURVE TABLE			
CURVE	LENGTH	RADIUS	DELTA
C1	157.27	165.00	54°36'38"
C2	48.31	165.00	16°46'36"
C3	150.47	165.00	52°15'02"
C4	63.93	41.00	89°20'08"
C5	42.46	165.00	14°44'43"
C6	44.08	165.00	15°18'28"
C7	64.31	41.00	89°52'12"
C8	44.38	165.00	15°24'35"
C9	44.38	165.00	15°24'35"
C10	76.60	700.00	6°16'10"
C11	73.76	700.00	6°02'15"
C12	44.38	165.00	15°24'35"
C13	63.78	165.00	22°08'56"
C14	36.44	135.50	15°24'35"
C15	51.50	191.50	15°24'35"
C16	40.84	26.00	90°00'00"
C17	40.84	26.00	90°00'00"
C18	40.84	26.00	90°00'00"
C19	40.84	26.00	90°00'00"
C20	35.64	138.50	14°44'43"
C21	49.28	191.50	14°44'43"
C22	14.51	38.50	21°35'33"
C23	174.63	75.50	1°32'31"14"
C24	14.51	38.50	21°35'33"
C25	40.54	38.50	21°35'33"
C26	14.51	38.50	21°35'33"
C27	175.33	75.50	1°33'03"18"
C28	14.51	38.50	21°35'33"
C29	40.78	26.00	89°52'12"
C30	37.00	138.50	15°18'28"
C31	51.16	191.50	15°18'28"
C32	85.72	75.50	65°02'53"
C33	89.61	75.50	68°00'25"
C34	8.91	191.50	2°39'59"
C35	6.18	75.50	4°41'21"
C36	14.91	75.50	11°19'06"
C37	83.80	75.50	63°35'30"
C38	69.74	75.50	52°55'17"
C39	40.84	26.00	90°00'00"
C40	40.84	26.00	90°00'00"
C41	174.64	191.50	52°15'02"
C42	126.30	138.50	52°15'02"
C43	48.96	191.50	14°38'54"
C44	107.31	191.50	32°06'22"
C45	40.55	138.50	16°46'36"
C46	56.07	191.50	16°46'36"
C47	21.37	191.50	6°23'34"
C48	34.71	191.50	10°23'02"

CURVE TABLE			
CURVE	LENGTH	RADIUS	DELTA
C49	182.53	191.50	54°36'38"
C50	132.01	138.50	54°36'38"
C51	51.97	191.50	15°33'02"
C52	83.50	191.45	24°59'21"
C53	47.05	191.33	14°05'22"
C54	18.37	191.50	5°29'46"
C55	94.86	138.50	39°14'33"
C56	37.15	138.50	15°22'05"
C57	40.88	26.00	89°54'56"
C58	40.88	26.00	90°05'04"
C59	33.23	38.50	49°27'30"
C60	299.38	61.50	278°55'00"
C61	33.23	38.50	49°27'30"
C62	13.79	61.50	12°50'57"
C63	90.31	61.50	84°08'00"
C64	36.03	61.50	33°33'58"
C65	56.37	61.50	52°31'07"
C66	76.80	61.50	71°33'10"
C67	26.08	61.50	24°17'49"
C68	40.84	26.00	90°00'11"
C69	40.84	26.00	89°59'49"
C70	76.55	726.50	6°02'15"
C71	70.97	673.50	6°02'15"
C72	79.50	726.50	6°16'10"
C73	73.70	673.50	6°16'10"
C74	40.74	26.00	89°46'05"
C75	40.95	26.00	90°13'55"
C76	51.50	191.50	15°24'35"
C77	37.25	138.50	15°24'35"
C78	44.10	191.50	13°11'44"
C79	7.40	191.50	2°12'51"
C80	40.84	26.00	90°00'00"
C81	40.84	26.00	90°00'00"
C82	40.84	26.00	90°00'00"
C83	40.84	26.00	90°00'00"
C84	51.50	191.50	15°24'35"
C85	37.25	138.50	15°24'35"
C86	74.03	191.50	22°08'56"
C87	53.54	138.50	22°08'56"
C88	33.23	38.50	49°27'30"
C89	299.40	61.50	278°55'00"
C90	33.23	38.50	49°27'30"
C91	93.02	61.50	86°39'14"
C92	20.37	61.50	18°58'36"
C93	80.94	61.50	75°24'20"
C94	105.07	61.50	97°52'50"
C95	40.37	191.50	12°04'44"
C96	2.53	26.00	5°34'05"

CURVE TABLE			
CURVE	LENGTH	RADIUS	DELTA
C49	182.53	191.50	54°36'38"
C50	132.01	138.50	54°36'38"
C51	51.97	191.50	15°33'02"
C52	83.50	191.45	24°59'21"
C53	47.05	191.33	14°05'22"
C54	18.37	191.50	5°29'46"
C55	94.86	138.50	39°14'33"
C56	37.15	138.50	15°22'05"
C57	40.88	26.00	89°54'56"
C58	40.88	26.00	90°05'04"
C59	33.23	38.50	49°27'30"
C60	299.38	61.50	278°55'00"
C61	33.23	38.50	49°27'30"
C62	13.79	61.50	12°50'57"
C63	90.31	61.50	84°08'00"
C64	36.03	61.50	33°33'58"
C65	56.37	61.50	52°31'07"
C66	76.80	61.50	71°33'10"
C67	26.08	61.50	24°17'49"
C68	40.84	26.00	90°00'11"
C69	40.84	26.00	89°59'49"
C70	76.55	726.50	6°02'15"
C71	70.97	673.50	6°02'15"
C72	79.50	726.50	6°16'10"
C73	73.70	673.50	6°16'10"
C74	40.74	26.00	89°46'05"
C75	40.95	26.00	90°13'55"
C76	51.50	191.50	15°24'35"
C77	37.25	138.50	15°24'35"
C78	44.10	191.50	13°11'44"
C79	7.40	191.50	2°12'51"
C80	40.84	26.00	90°00'00"
C81	40.84	26.00	90°00'00"
C82	40.84	26.00	90°00'00"
C83	40.84	26.00	90°00'00"
C84	51.50	191.50	15°24'35"
C85	37.25	138.50	15°24'35"
C86	74.03	191.50	22°08'56"
C87	53.54	138.50	22°08'56"
C88	33.23	38.50	49°27'30"
C89	299.40	61.50	278°55'00"
C90	33.23	38.50	49°27'30"
C91	93.02	61.50	86°39'14"
C92	20.37	61.50	18°58'36"
C93	80.94	61.50	75°24'20"
C94	105.07	61.50	97°52'50"
C95	40.37	191.50	12°04'44"
C96	2.53	26.00	5°34'05"

LINE TABLE		
LINE	BEARING	LENGTH
L1	S15°58'23"E	146.77
L2	S15°09'52"W	147.04
L3	S47°46'43"W	104.49
L4	S00°10'42"W	83.04
L5	S04°53'23"E	148.97
L6	S26°38'42"W	122.90
L7	N81°09'21"W	85.74
L8	N76°39'20"W	28.48
L9	N89°53'53"E	26.42
L10	N75°38'28"E	38.86
L11	N62°14'52"E	23.49
L12	N54°19'44"E	15.92
L13	N42°02'42"E	17.24
L14	N03°58'37"E	24.83
L15	S74°35'25"W	17.12
L16	N15°24'35"W	11.00
L17	N00°53'36"E	4.45
L18	S37°38'30"E	6.37
L19	N89°46'05"E	12.74
L20	N89°46'05"E	17.84
L21	S52°15'02"E	38.36
L22	S52°26'39"W	9.93
L23	N74°35'25"E	17.12
L24	N90°00'00"W	14.03
L25	S00°06'07"E	29.50
L26	S00°06'07"E	29.50
L27	N89°46'05"E	12.38
L28	S15°24'35"E	12.98
L29	S00°06'07"E	10.62
L30	N90°00'00"E	17.78
L31	S74°16'32"W	20.21
L32	N64°04'44"E	24.90
L33	S90°00'00"E	49.52
L34	N76°23'28"W	20.26
L35	S85°54'16"E	19.36
L36	N75°30'38"W	17.68
L37	S67°22'50"E	31.04
L38	S90°00'00"E	42.20
L39	S53°07'35"W	27.15
L40	N60°30'12"E	16.79