

Lemay Avenue

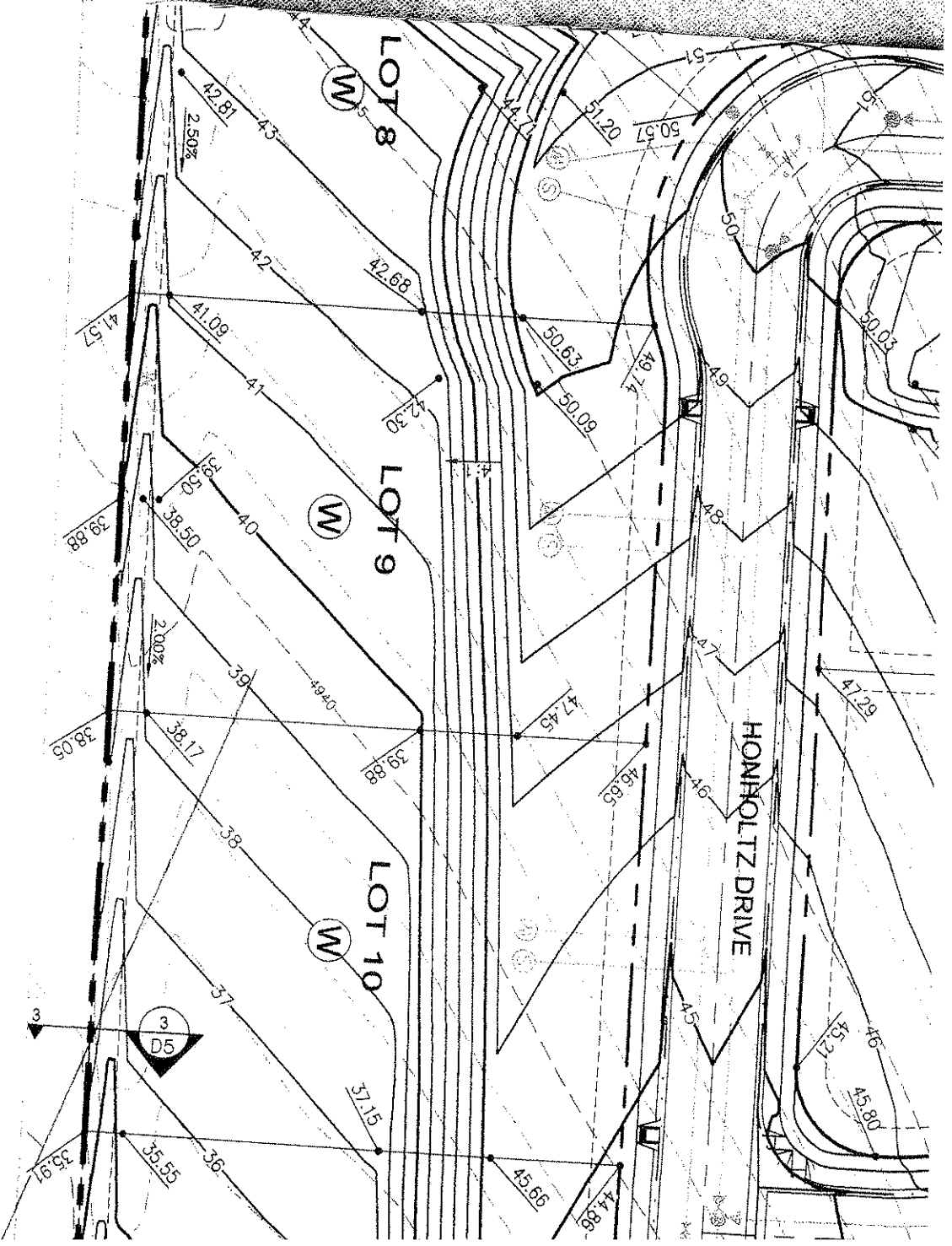
ESTATES

LOT 9

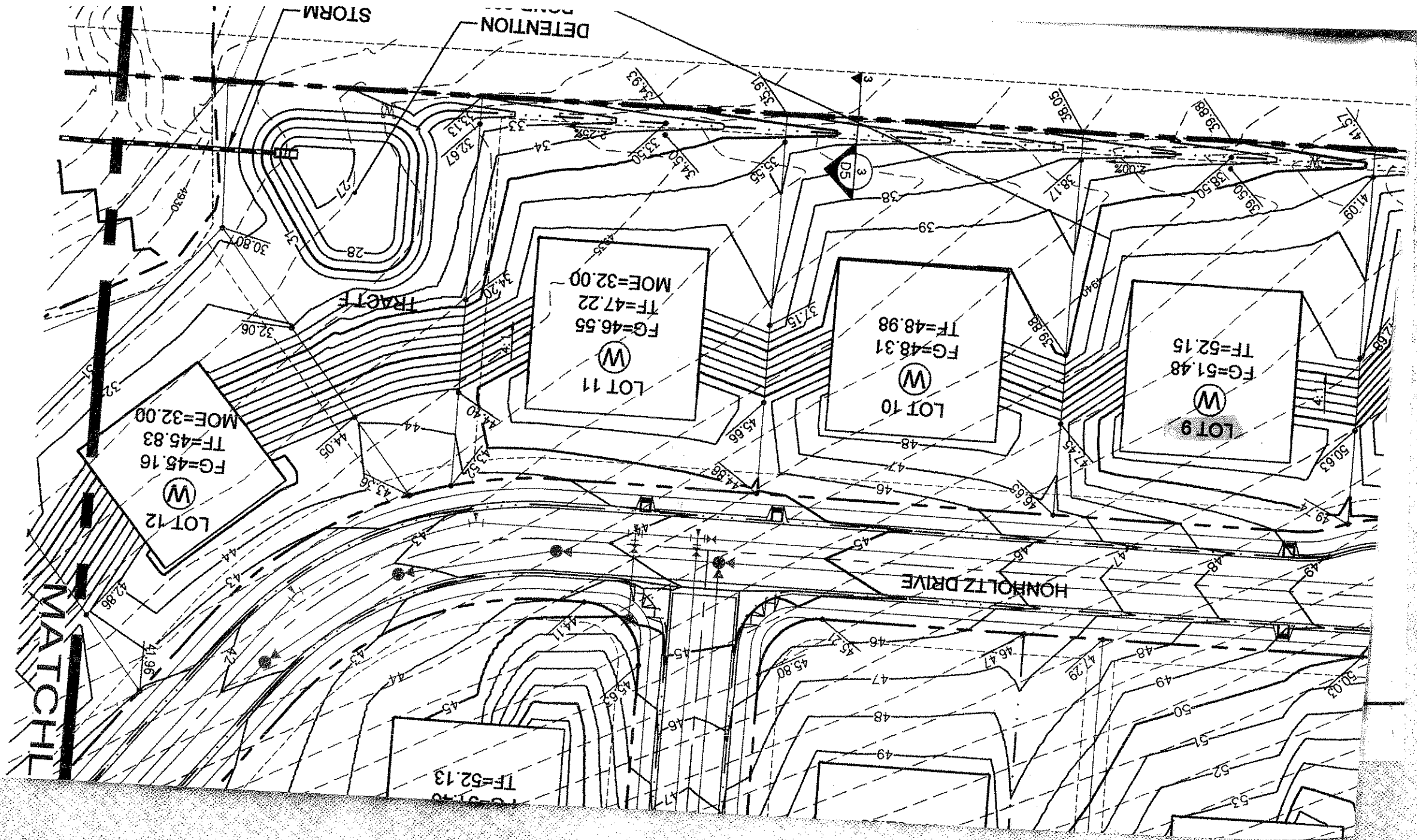
PLAT DOCUMENTS

INCLUDE:

- 1) Dimensional Plat
- 2) Grading Plat
- 3) Top Of Foundation Plat
- 4) Curve & Line Table
- ~~5) Street Tree Requirements~~
- ~~6) Street Tree Landscaping Plans~~



NOTE:
PRIOR TO THE ISSUANCE
DETAILED GRADING PLAN
BE SUBMITTED BY THE B
OF FORT COLLINS STORM



CURVE TABLE						
CURVE	LENGTH	RADIUS	DELTA	CHORD	CH BEARING	
C1	157.27	165.00	54°36'38"	151.38	N27°13'15"E	
C2	48.31	165.00	16°46'36"	48.14	S46°08'16"W	
C3	150.47	165.00	52°15'02"	145.61	N63°52'29"E	
C4	63.93	41.00	89°20'08"	57.65	S45°19'56"E	
C5	42.46	165.00	14°44'43"	42.35	N08°02'14"W	
C6	44.08	165.00	15°18'28"	43.95	S07°45'21"E	
C7	64.31	41.00	89°52'12"	57.92	S44°49'59"W	
C8	44.38	165.00	15°24'35"	44.24	S07°42'17"E	
C9	44.38	165.00	15°24'35"	44.24	N07°42'17"W	
C10	76.60	700.00	6°16'10"	76.56	N87°05'50"W	
C11	73.76	700.00	6°02'15"	73.73	S86°58'52"E	
C12	44.38	165.00	15°24'35"	44.24	S86°58'52"E	
C13	63.78	165.00	22°08'56"	63.39	N82°17'43"E	
C14	36.44	135.50	15°24'35"	36.33	N82°17'43"E	
C15	51.50	191.50	15°24'35"	51.35	N82°17'43"E	
C16	40.84	26.00	90°00'00"	36.77	N29°35'25"E	
C17	40.84	26.00	90°00'00"	36.77	N60°24'35"W	
C18	40.84	26.00	90°00'00"	36.77	S60°24'35"E	
C19	40.84	26.00	90°00'00"	36.77	S29°35'25"W	
C20	35.64	138.50	14°44'43"	35.55	N08°02'14"W	
C21	49.28	191.50	14°44'43"	49.15	N08°02'14"W	
C22	14.51	38.50	21°35'33"	14.42	N10°07'54"E	
C23	174.63	75.50	132°31'14"	138.22	S45°19'56"E	
C24	14.51	38.50	21°35'33"	14.42	S79°12'13"W	
C25	40.54	26.00	89°20'08"	36.56	S45°19'56"E	
C26	14.51	38.50	21°35'33"	14.42	S79°26'08"E	
C27	175.33	75.50	133°03'18"	138.50	S44°49'59"W	
C28	14.51	38.50	21°35'33"	14.42	N10°53'53"W	
C29	40.78	26.00	89°52'12"	36.73	S44°49'59"W	
C30	37.00	138.50	15°18'28"	36.89	S07°45'21"E	
C31	51.16	191.50	15°18'28"	51.01	S07°45'21"E	
C32	85.22	75.50	65°02'53"	81.19	S78°50'12"W	
C33	89.61	75.50	68°00'25"	84.45	S12°18'33"W	
C34	8.91	191.50	2°39'59"	8.91	N01°59'51"W	
C35	6.18	75.50	4°41'21"	6.18	N70°45'07"E	
C36	14.91	75.50	11°19'06"	14.89	S15°16'08"W	
C37	83.80	75.50	63°35'30"	79.56	S22°11'11"E	
C38	69.74	75.50	52°55'17"	67.28	S80°26'34"E	
C39	40.84	26.00	90°00'00"	36.77	N45°00'00"E	
C40	40.84	26.00	90°00'00"	36.77	S45°00'00"E	
C41	174.64	191.50	52°15'02"	168.65	N63°52'29"E	
C42	126.30	138.50	52°15'02"	121.97	N63°52'29"E	
C43	48.96	191.50	14°38'54"	48.83	N82°40'33"E	
C44	107.31	191.50	32°06'22"	105.91	N53°48'09"E	
C45	40.55	138.50	16°46'36"	40.41	S46°08'16"W	
C46	56.07	191.50	16°46'36"	55.87	S46°08'16"W	
C47	21.37	191.50	6°23'34"	21.36	S40°56'45"W	
C48	34.71	191.50	10°23'02"	34.66	S49°20'02"W	

CURVE TABLE						
CURVE	LENGTH	RADIUS	DELTA	CHORD	CH BEARING	
C49	182.53	191.50	54°36'38"	175.89	N27°13'15"E	
C50	132.01	138.50	54°36'38"	127.07	N27°13'15"E	
C51	51.97	191.50	15°33'02"	51.81	N46°45'03"E	
C52	83.50	191.45	24°59'21"	82.84	N26°28'57"E	
C53	47.05	191.33	14°05'22"	46.93	N06°57'24"E	
C54	18.37	191.50	5°29'46"	18.36	N72°36'13"E	
C55	94.86	138.50	39°14'33"	93.02	N34°54'17"E	
C56	37.15	138.50	15°22'05"	37.04	N07°35'58"E	
C57	40.80	26.00	89°54'56"	36.74	N45°02'32"W	
C58	40.88	26.00	90°05'04"	36.80	S44°57'28"W	
C59	33.23	38.50	49°27'30"	32.21	N65°16'15"W	
C60	299.38	61.50	278°55'00"	79.95	N00°00'00"E	
C61	33.23	38.50	49°27'30"	32.21	N65°16'15"E	
C62	13.79	61.50	12°50'57"	13.76	S46°57'58"E	
C63	90.31	61.50	84°08'00"	82.41	N84°32'33"E	
C64	36.03	61.50	33°33'58"	35.52	N25°41'34"E	
C65	56.37	61.50	52°31'07"	54.42	N17°20'58"W	
C66	76.80	61.50	71°33'10"	71.91	N79°23'06"W	
C67	26.08	61.50	24°17'48"	25.88	S52°41'24"W	
C68	40.84	26.00	90°00'11"	36.77	S44°59'54"E	
C69	40.84	26.00	89°59'49"	36.77	N45°00'06"E	
C70	76.55	726.50	6°02'15"	76.52	S86°58'52"E	
C71	70.97	726.50	6°02'15"	70.94	S86°58'52"E	
C72	79.50	726.50	6°16'10"	79.46	N87°05'50"W	
C73	73.70	673.50	6°16'10"	73.66	N87°05'50"W	
C74	40.74	26.00	89°46'05"	36.70	S44°53'03"W	
C75	40.95	26.00	90°13'55"	36.84	N45°06'57"W	
C76	51.50	191.50	15°24'35"	51.35	S07°42'17"E	
C77	37.25	138.50	15°24'35"	37.14	S07°42'17"E	
C78	44.10	191.50	13°11'44"	44.01	S08°48'43"E	
C79	7.40	191.50	2°12'51"	7.40	S01°06'25"E	
C80	40.84	26.00	90°00'00"	36.77	N29°35'25"E	
C81	40.84	26.00	90°00'00"	36.77	S60°24'35"E	
C82	40.84	26.00	90°00'00"	36.77	S29°35'25"W	
C83	40.84	26.00	90°00'00"	36.77	N60°24'35"W	
C84	51.50	191.50	15°24'35"	51.35	N07°42'17"W	
C85	37.25	138.50	15°24'35"	37.14	N07°42'17"W	
C86	74.03	191.50	22°08'56"	73.57	N63°30'57"E	
C87	53.54	138.50	22°08'56"	53.21	N63°30'57"E	
C88	33.23	38.50	49°27'30"	32.21	N27°10'14"W	
C89	299.40	61.50	278°55'00"	79.95	N37°33'31"W	
C90	33.23	38.50	49°27'30"	32.21	N27°42'44"E	
C91	93.02	61.50	86°39'14"	84.40	N58°34'22"E	
C92	20.37	61.50	18°58'36"	20.28	N05°45'27"E	
C93	80.94	61.50	75°24'20"	75.23	N41°26'01"W	
C94	105.07	61.50	97°52'50"	92.75	S51°55'24"W	
C95	40.37	191.50	12°04'44"	40.30	N09°22'13"W	
C96	2.53	26.00	53°4'05"	2.53	N71°48'22"E	

LINE TABLE		
LINE	BEARING	LENGTH
L1	S15°58'23"E	146.77
L2	S15°09'52"W	147.04
L3	S47°46'43"W	104.49
L4	S00°10'42"W	83.04
L5	S04°53'23"E	148.97
L6	S26°38'42"W	122.90
L7	N81°09'21"W	85.74
L8	N76°39'20"W	28.48
L9	N89°53'53"E	26.42
L10	N75°38'28"E	38.86
L11	N62°14'52"E	23.49
L12	N54°19'44"E	15.92
L13	N42°02'42"E	17.24
L14	N03°58'37"E	24.83
L15	S74°35'25"W	17.12
L16	N15°24'35"W	11.00
L17	N00°53'36"E	4.45
L18	S37°38'30"E	6.37
L19	N89°46'05"E	12.74
L20	N89°46'05"E	17.84
L21	S52°15'02"E	38.36
L22	S52°26'39"W	9.93
L23	N74°35'25"E	17.12
L24	N90°00'00"W	14.03
L25	S00°06'07"E	29.50
L26	S00°06'07"E	29.50
L27	N89°46'05"E	12.38
L28	S15°24'35"E	12.98
L29	S00°06'07"E	10.62
L30	N90°00'00"E	17.78
L31	S74°16'32"W	20.21
L32	N64°04'44"E	24.90
L33	S90°00'00"E	49.52
L34	N76°23'28"W	20.26
L35	S85°54'16"E	19.36
L36	N75°30'38"W	17.68
L37	S67°22'50"E	31.04
L38	S90°00'00"E	42.20
L39	S53°07'35"W	27.15
L40	N60°30'12"E	16.79